

MONTHLY MEMBERSHIP PROGRESS REPORT

LOCATION NEW ZEALAND

District 202 F

Results as of: 6/30/2023

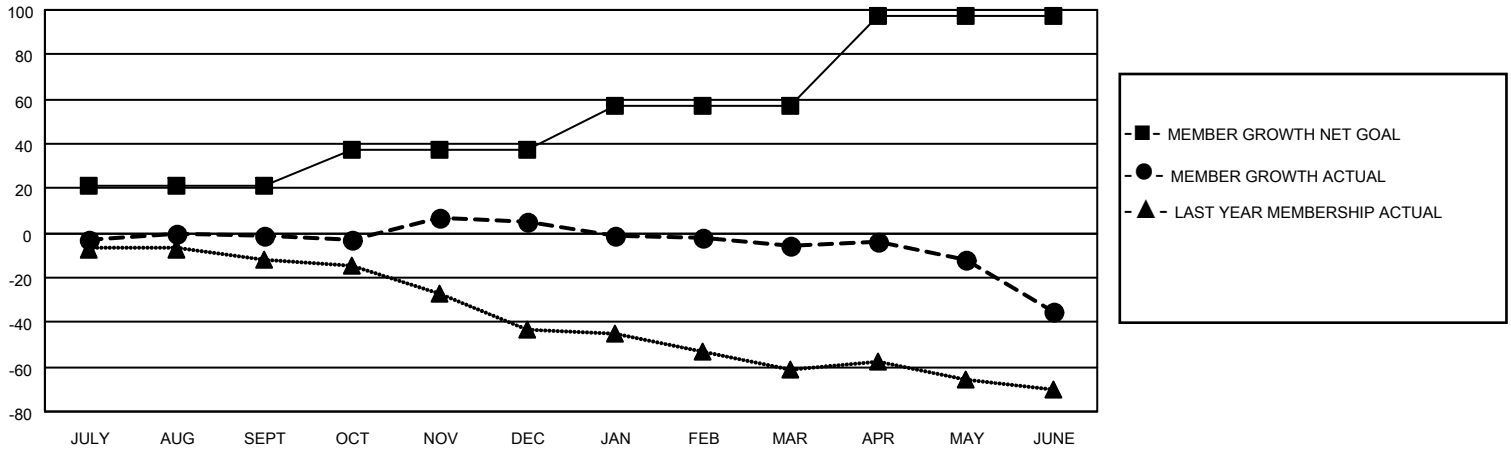
| Clubs | | | |
|-----------------------|---------------|-----------|---------------|
| RESULTS FOR 2022-2023 | | | |
| QUARTER | NEW CLUB GOAL | NEW CLUBS | DROPPED CLUBS |
| JULY/AUG/SEPT | 0 | 0 | 0 |
| OCT/NOV/DEC | 0 | 0 | 0 |
| JAN/FEB/MAR | 0 | 0 | 0 |
| APR/MAY/JUNE | 1 | 0 | 0 |

| Members | | | |
|-----------------------|------------------------|----------------------|---|
| RESULTS FOR 2022-2023 | | | |
| QUARTER | MEMBER GROWTH NET GOAL | MEMBER GROWTH ACTUAL | DROPPED MEMBERS ACTUAL (including transfers) |
| JULY/AUG/SEPT | 21 | 30 | 29 |
| OCT/NOV/DEC | 16 | 18 | 12 |
| JAN/FEB/MAR | 20 | 12 | 21 |
| APR/MAY/JUNE | 40 | 22 | 47 |

GOALS AND ACTUAL NEW CLUBS CUMULATIVE



GOALS AND ACTUAL MEMBERS CUMULATIVE



DROPPED CLUBS: 0

32 CLUBS OF 42 ADDED 1 OR MORE NEW MEMBERS

GENDER DISTRIBUTION

| | |
|----------------------|--------------|
| MALE | 756 (64.67%) |
| FEMALE | 413 (35.33%) |
| NON BINARY | 0 (0.00%) |
| PREFER NOT TO ANSWER | 0 (0.00%) |

DROPPED MEMBERS

| | |
|----------------|------------|
| DECEASED | 11 |
| CLUB CANCELLED | 0 |
| OTHER | 97 |
| TOTAL | 108 |

[CLICK HERE FOR CUMULATIVE MEMBERSHIP DATA](#)

| | |
|---------------------------------|----|
| TOTAL FAMILY UNIT MEMBERS | 75 |
| FAMILY MEMBERS PAYING HALF DUES | 38 |